



NMLDS Project

Kickoff

12/16/20

Project Summary: Who?

- The New Mexico Longitudinal Data System (NMLDS) Project is a collaboration between:
 - The New Mexico Department of Workforce Solutions (DWS),
 - The New Mexico Early Childhood Education & Care Department (ECEDES)
 - The New Mexico Higher Education Department (HED), and
 - The New Mexico Public Education Department (PED)



Project Summary: Why?

- The NMLDS Project will be performed to stand-up a system, produce policies and processes and provide training that will help educators, workforce developers, policymakers, legislators, researchers and others:
 - See aggregate trends in student performance
 - See aggregate trends in workforce performance
 - Leverage data to improve student outcomes
 - Leverage data to improve workforce outcomes
 - Leverage data to improve equity
 - Perform predictive analysis
 - Obtain assistance with Federal and other reporting



Project Summary: What?

- The NMLDS Project will:
 - Aggregate relevant data from partner agencies into either a federated or centralized data warehouse
 - Cleanse & deduplicate data
 - Match data
 - Implement a Master Unique ID
 - Establish Data Governance
 - Implement robust reporting & data visualization capabilities
 - Automate data sharing
 - Provide interoperability
 - Stand-up portal (public & password protected)



Product Description

- The NMLDS system will:
 - Link P-20W+ (early childhood through workforce) data housed at DWS, ECECD, HED, and PED via a federated or centralized data warehouse
 - Be hosted on premises or in the cloud



Data Elements

- Data collected and reported through NMLDS may include:
 - Student (pre-K, K-12, and post-secondary)
 - Demographics
 - Enrollment
 - Dual-credit status
 - Remediation status
 - Educational program participation
 - Financial aid
 - Welfare or educational interventions
 - Teacher
 - Preparation
 - Certification/Licensure
 - Workforce
 - Employment
 - Industry
 - Earnings
 - Participation in workforce training initiatives



Project Team

| Name | Agency | Role |
|--------------------|--------|--|
| Anna Lopez | HED | Project Manager |
| Jean Wood | PED | Project Manager Advisor |
| Blezoo Varghese | DoIT | IT Architect |
| Julie Lopez-Casaus | DWS | Business Analyst |
| Paloma Sena | DWS | Business Analyst |
| Lynn Carrier | DWS | Systems Analyst |
| Rachel Moskowitz | DWS | Subject Matter Expert for statistics and performance, outcome, use |
| TBD | TBD | Data Architect |
| TBD | TBD | Database Analyst |



Project Steering Committee

- Membership
 - Three representatives from PED
 - Three representatives from HED
 - Three representatives from DWS
 - Three representatives from ECEDS
- Monthly meetings
 - First meeting Friday, 12/18



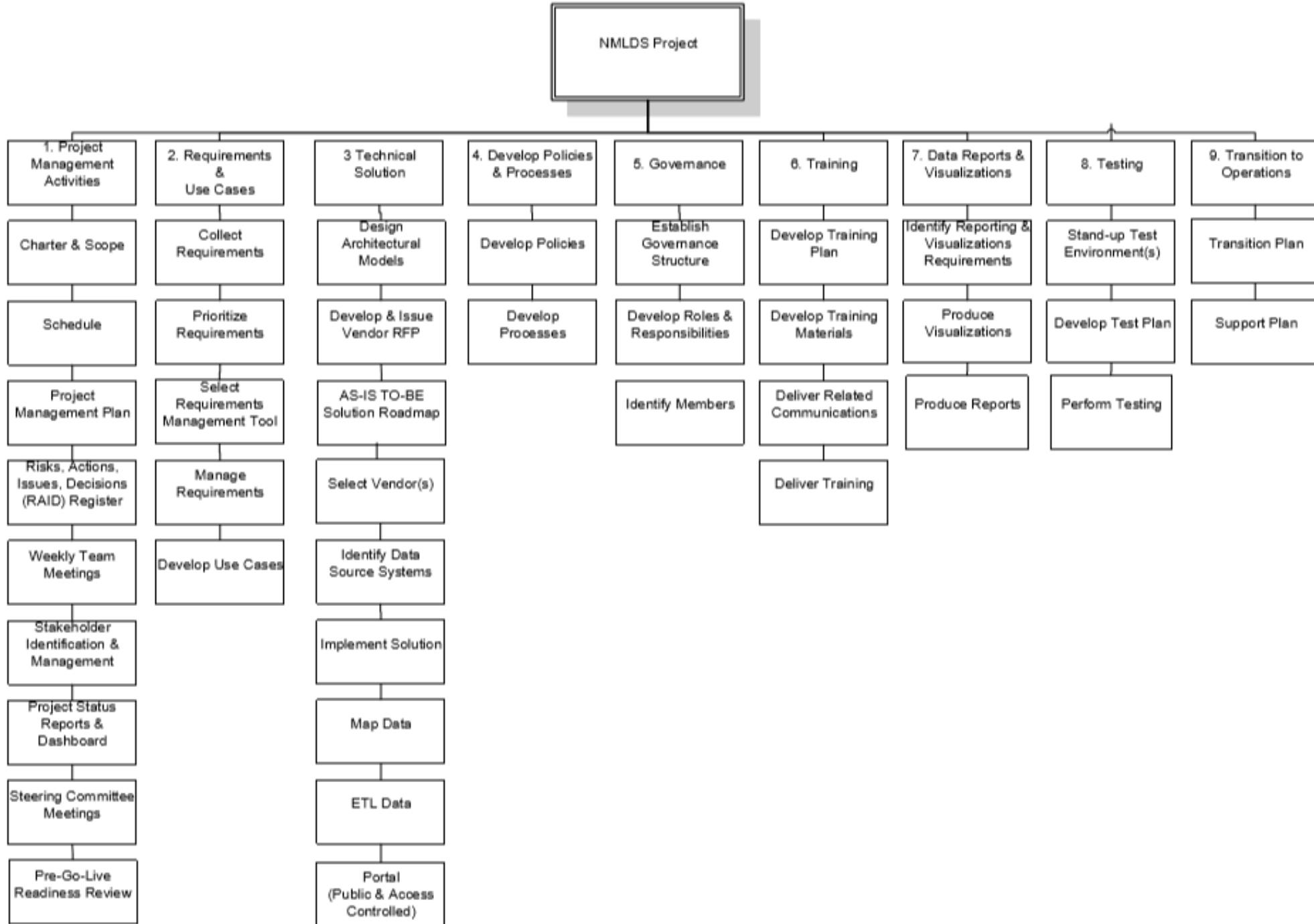
Budget

| ITEM | FY2021 ESTIMATE | FY2022 ESTIMATE | FY2023 ESTIMATE | FY2024 ESTIMATE | TOTAL |
|--|--------------------|--------------------|--------------------|--------------------|-------------|
| Professional Services (including IV&V) | \$228,000 | \$565,000 | \$565,000 | \$250,000 | \$1,608,000 |
| Implementation Services (vendor only) | \$0 | \$218,000 | \$98,000 | \$32,000 | \$348,000 |
| Hardware/Infrastructure | \$0 | \$80,000 | \$8,000 | \$0 | \$88,000 |
| Software Licensing | \$11,000 | \$777,000 | \$81,000 | \$81,000 | \$950,000 |
| Internal staff (work charged to project) | \$35,000 | \$74,000 | \$39,000 | \$21,000 | \$169,000 |
| TOTAL | \$274,000 | \$2,058,000 | \$801,000 | \$412,000 | \$3,545,000 |

Timeline

| MILESTONE | DATE |
|---|---------|
| Initiation Phase Begins | 8/24/20 |
| Project Kickoff | 12/20 |
| Begin gathering requirements | 2/21 |
| Finish gathering requirements | 5/21 |
| Issue RFP | 4/21 |
| Select vendor and execute contract | 9/21 |
| Planning Phase Begins | 10/21 |
| Execution Phase Begins | 1/22 |
| Deploy new system to production / go-live | 10/23 |
| Closing Phase Begins | 5/24 |
| Project Completed | 6/24 |





Project Values

- Security
- Privacy
- Equity
- Sustainability



Benefits

1. NMLDS includes data from the entire state, not just a single school district or program.
2. NMLDS users can examine information for different geographic areas as well as for the entire state.
3. Securely connect data from multiple education and employment programs to show the relationships among the programs and who they serve.
4. Ensures compliance with relevant data privacy laws.
5. Link data over time to allow users to measure progress and examine the relationships between earlier experiences and long-term outcomes.
6. Help users examine long-term trends for different groups of students.
7. Teachers can see their student's education history and plan their instruction accordingly.
8. Teachers can identify and provide additional support to students who are at risk of failing or dropping out of school.
9. School administrators can see how their graduating classes fare in college and in the workforce.
10. School administrators can identify ways to better prepare students in the future by implementing programs that help teachers improve instruction, tailor student support to student needs and revise course offerings.



Benefits *(continued)*

11. Postsecondary institutions can assess how well their programs align to workforce needs and how well their graduates are prepared to contribute to high demand career fields.
12. By reviewing information available from the NMLDS, students and their families can determine which education services, schools or degree programs will help them meet their academic and professional goals.
13. Workers can decide which training programs and certifications will help them advance their careers based on wage and employment information from others with similar credentials.
14. With NMLDS data, researchers can help educators, policy makers, and the community understand more about the connections between education programs and student outcomes.
15. Researchers can help by examining trends to inform policies and programs and answering questions related to topics like college and career readiness or closing achievement gaps.
16. NMLDS also supports more efficient operations and better policies across the state.
17. NMLDS help streamline data collection so that education programs can obtain data for required state and federal reporting while minimizing the burden of redundant data collections on schools and districts.
18. Education leaders can make informed decisions about supplemental services and course offerings to maximize student learning.
19. Lawmakers and policymakers can evaluate how best to fund education, training, and workforce programs and how to improve the policies that govern them.
20. The information provided by the NMLDS allows states to use evidence to answer questions more effectively about their education and workforce systems and, ultimately, to better serve students and workers.



Any

Questions

More Questions?

- Anna Lopez, PM
 - Anna.Lopez2@state.nm.us
 - 505-603-7333

